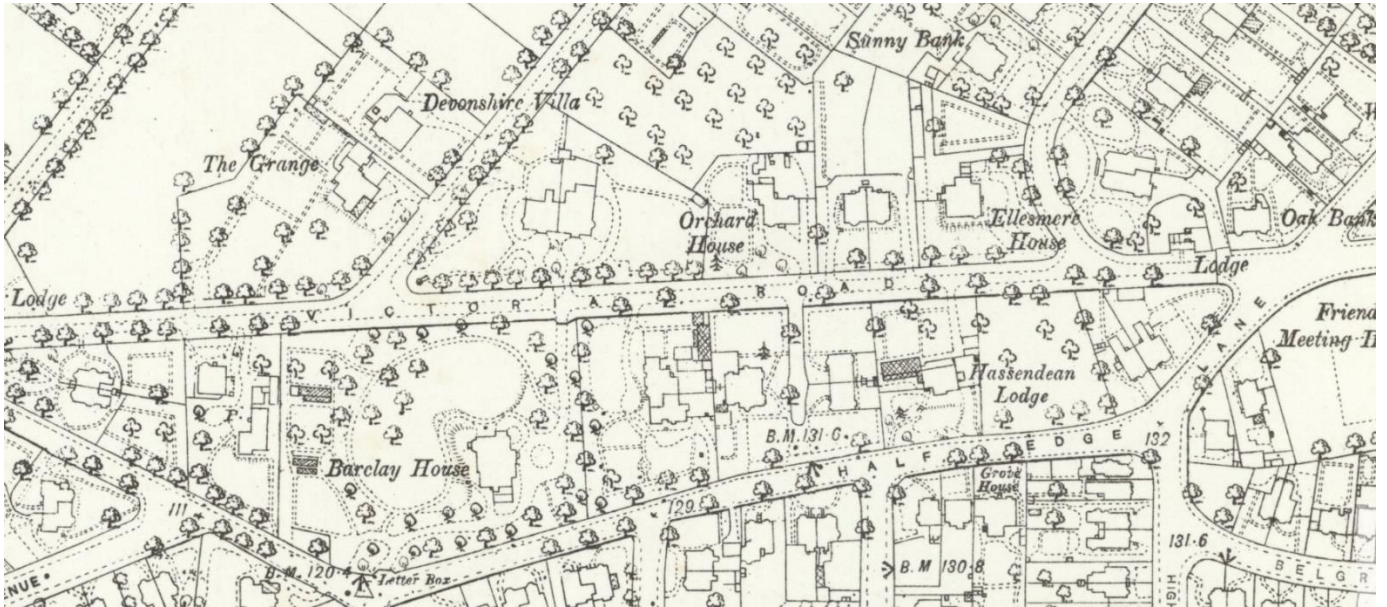


## Back in Time - 29 - Victoria Road

by John Rabbitt

Today I have posted three photographs of Victoria Road.



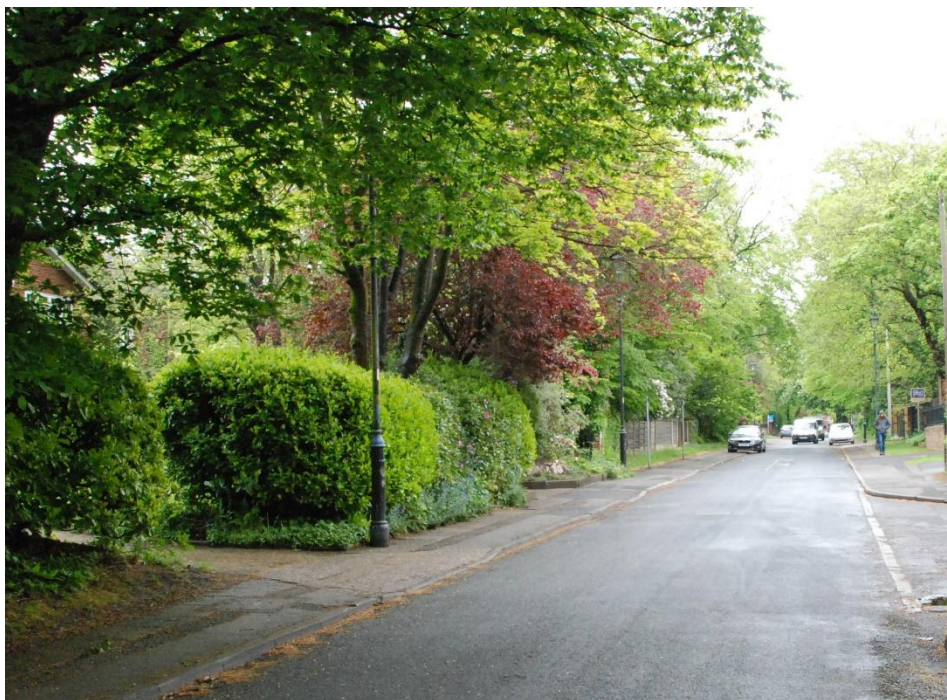
Map of Victoria Road 1893

The photograph, Victoria Road 1 - c1912, was taken looking towards the Victoria Road gate house with the Sandwich Road junction in the distance on the left.



**Victoria Road 1 - c1912**

The structure on the right would be a store of some description belonging to a house fronting Monton Road. The map Victoria Road – 1893 does actually show a small building on the boundary of Victoria Road opposite to Orchard House.



**Victoria Road 1 - 2020**



The photographs Victoria Road 2 & 3 are of the junction with Sandwich Road looking towards the Stafford Road gate house.

The gated entrance you can see on the corner of Sandwich Road was to Ellesmere House, one of the last Victorian detached villas in Ellesmere Park to be demolished and replaced with a mock Victorian apartment block.

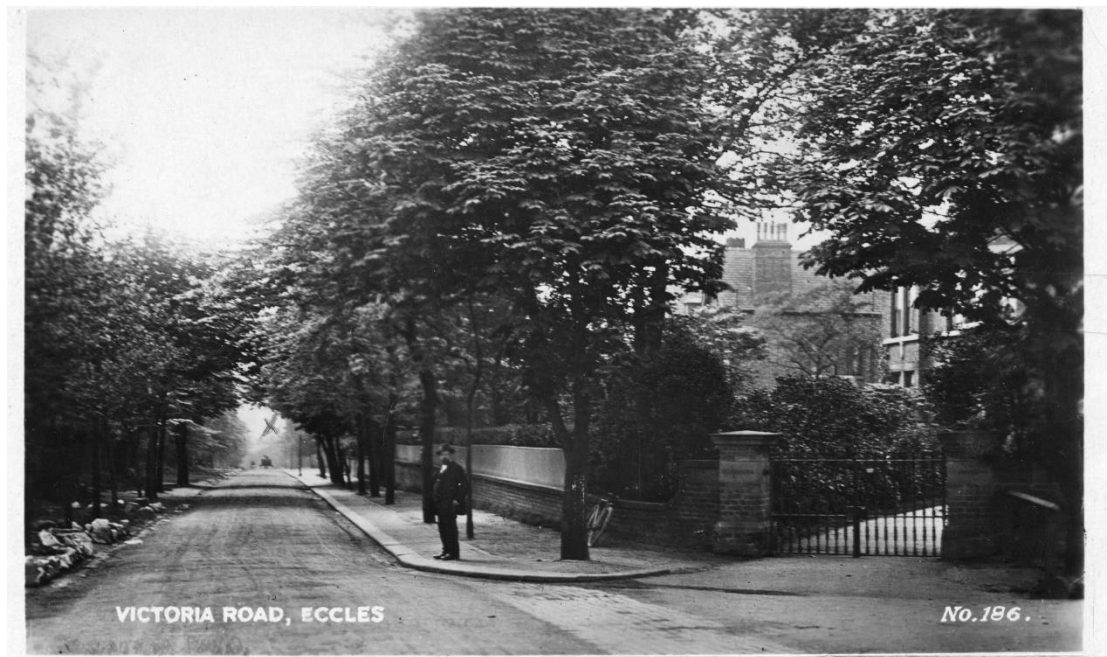


**Victoria Road 2 - c1912**



**Victoria Road 2 - 2020**





**Victoria Road 3 - undated**



**Victoria Road 3 - undated**

---- End of Article ----